

**LVB** LVB

Engineered Bamboo  
**Structural Composite  
Lumber**



We use the most useful,  
rapidly renewable resource  
in the world, to improve life  
on **earth**.

 altPlus®





**LVB**

## Structural Composite Lumber

- Extremely versatile
- High load-bearing capacity combined with slim dimensions
  - Suitable for large spans
  - Exceptional surface quality
- Locally sourced, Rapidly renewable raw material





## ≡ Description

altPlus LVB™ is a laminated veneer bamboo made from locally sourced bamboo, manufactured exclusively by altPlus. altPlus LVB™ is produced by thermo treating selected bamboo to an exact state. During the thermo treatment, chemical and structural changes occur within the bamboo which alter and improve basic characteristics. Through further processing of altPlus LVB™, the result is most durable, stable and sustainable product in its class and is an ideal material for use in beams, boards, panels and flooring elements.

With its exceptionally high strength altPlus LVB™ allows structures with significantly slimmer dimensions, compared to softwood materials. altPlus LVB™ is available in visible and non-visible quality. Due to its incredible rate for renewability, altPlus LVB™ is the only Structural Composite Lumber that qualifies for Rapidly Renewable building materials.

## 📦 Details

### Application

- Structural Beams and Solutions
- Mid-Rise Structures - Towers
- Curved & Straight Beams/Columns
- Full Fabrication and Finishing
- Commercial Structures
- Hybrid Curtain Wall - Vertical System
- Roof Glazing - Horizontal & Angled System
- Solar Structures and Entry Canopies
- Spider Connected Glass
- Custom Options

### LEED Credits

- MR-6 - Fast renewable materials
- MRc3 - Building Product Disclosure - Sourcing of Raw Materials
- EQc2 - Low Emitting Materials (No added formaldehyde)
- INc1 - Innovation in Design (Life Cycle/Environment Impact)





### ≡ Description

altPlus LVB™ Beam is made from parallel-laminated 19 mm altPlus LVB™ veneer boards (\*can be customized). Thanks to its exceptional strength and stiffness, altPlus LVB™ Beam is the ideal material for slender and elegant constructions and wide spans combined with high loads. altPlus LVB™ beams can also be installed so that its veneer layers are aligned vertically. altPlus LVB™ beams are sanded at the factory and therefore ideal for exposed applications

STANDARD PRODUCT DETAILS				
altPlus LVB™ Beam	Length tolerance	Width tolerance	Height tolerance	Moisture Content
	±5mm	±2mm	h ≤ 400mm + 4mm / - 2mm h > 400mm + 1% / -0,5%	approx. 6%-10% (+/- 2%)

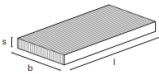
- These tolerances refer to wood with a moisture of 6% ex works. The swelling and shrinking behavior of higher equilibrium moisture contents must be taken into account.
- Finish Sanded, 80 grit  
Boards and altPlus LVB™ Beam are also available as non-sanded units.
- Packaging Packs are foil-wrapped and secured with straps to pallet.



### ≡ Description

In altPlus LVB™ Panel, the veneer layers are vertical or horizontal to the panel surface. This material is extremely durable and easy to clean, which makes it particularly suitable for table tops, desks, ceiling and wall paneling, stairs and elegant timber floors. altPlus LVB™ panels can be machined like solid hardwood or hardwood boards. Thanks to their attractive veneer layer pattern, the panels are ideal for exposed applications, and the sanded surfaces allow for easy coating.

#### STANDARD PRODUCT DETAILS

altPlus LVB™ Panel	Length tolerance	Width tolerance	Height tolerance	Thickness tolerance	Cross-section angle	Moisture Content
	±5mm	±1%	$h \leq 400\text{mm} + 4\text{mm} / - 2\text{mm}$ $h > 400\text{mm} + 1\% / -0,5\%$	±1mm	max. deviation from right angle: 1.1° (+/- 2%)	approx. 6%-10%

- These tolerances refer to wood with a moisture of 6% ex works. The swelling and shrinking behavior of higher equilibrium moisture contents must be taken into account.
- Finish Sanded, 80 grit  
Boards and altPlus LVB™ Beam are also available as non-sanded units.
- Packaging Packs are foil-wrapped and secured with straps to pallet.



## Sustainability in Performance

altPlus LVB™ delivers the highest performance in engineered bamboo structure systems and the sustainability leadership for a new generation of architectural products.

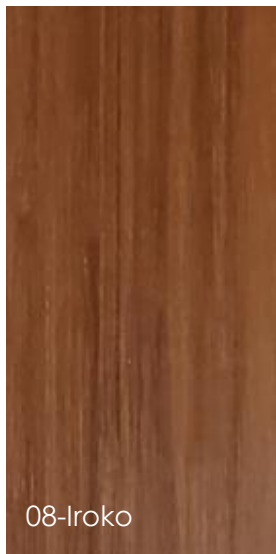
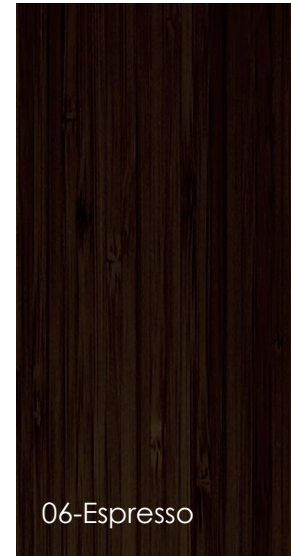
All structures may be certified with FSC materials and support the achievement of LEED credits.





## Designer Note

This colour chart represents standard engineered bamboo colours. There is a wide range of patterns, tones, and composite surfaces that are available for integration into structure systems.





# altPlus<sup>®</sup> Architectural

For more information and a list of distribution in your area visit [www.altplus.xyz](http://www.altplus.xyz) or call 86 (0)21 612 77766

altPlus Technologies is an engineered bamboo products company delivering service-oriented solutions developed in collaboration with its customers. Its premium solutions are based on ecological, high quality engineered bamboo as a raw material.

Engineered bamboo is the most rapidly renewable, and highest sustainable building material in the world. altPlus Technologies manages and sources bamboo globally and is an approved Chain of Custody supplier.

AEB0110 Jan 06.

The photographs in this brochure are for illustration purposes only.

altPlus Technologies reserves the right to change the range without notice.

Every effort has been made to ensure that colours are accurate within the limitations of natural lighting conditions and the four colour printing process.

## altPlus Architectural

Telephone: 021 61277766  
Email: [connect@altplus.xyz](mailto:connect@altplus.xyz)  
[www.altplus.xyz](http://www.altplus.xyz)

AEB0110 January 06

